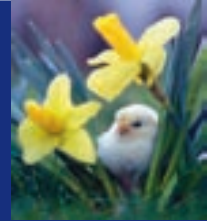




Oxfordshire Branch

March 2009



TESCO WEEK 23 APRIL- 3 MAY

Can you and your friends please spare a couple of hours to collect money for the Oxfordshire RSPCA? Any day, any time. Stores - Banbury, Bicester, Abingdon and Cowley. Please contact Judith for more details.

Is your school having a charity fundraising day? - Please think of helping your local RSPCA (please contact Judith on 07791 292635 for balloons, posters, banners, etc. to help advertise the charity)

Judith Garvey (Administrator) tel 01608 646762
07791 292635
judithgarvey@fsmail.net

Sarah Twist (Fostering Co-ordinator) sarah.
twist2@ntlworld.com
07879 861941

Katherine Morris (Microchipping Co-ordinator)
katherine.morris@mansfield.ox.ac.uk
01993 813701

Ted Johnson (Welfare Assistance) 01869 338355

Francesca Iaria (Newsletter Editor) frankikki@yahoo.co.uk
01865 451344
07871 662204

We have monthly meetings on the third Tuesday of every month in Woodstock Church hall from 7pm - All are welcome.

Get a £10 Microchipping Gift Voucher!!!
Please contact Katherine for more details

Does your company offer matched funding for raising money for a local charity? - Please remember local animals that need our help.

If you would like to take part in a charity or sponsored event, such as a fun run, sponsored silence, pub quiz, coffee morning, or tombola please contact Judith for more information or to obtain a sponsor form for your local RSPCA.

Thank you very much

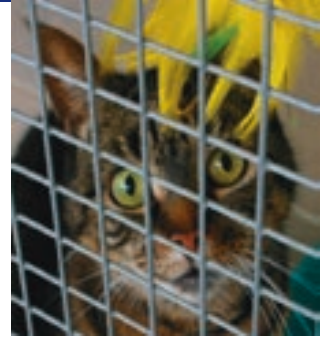
For the £152.30 cheque from Mr John Raymond

For the £32 cheque in memory of Donald Campbell of
Banbury

Rehoming

Millie (Tabby; Sex F; Age 13) has been at Willow Farm since we opened in June 2008, which is a real shame. She had a very troubled past, and got upset and frightened easily if she thought someone was going to hurt her. Millie is now becoming much calmer, and once she trusts you she can be quiet and content, and even friendly and affectionate at times.

Millie cannot cope with the unpredictable behaviour or attention of children or other cats or pets, but someone who understands her, and can give Millie her own space when she needs it, would be her dream come true - are you that person?



Bagpuss (Ginger; Sex M; Age ?) is a big, lovable older (his age is uncertain) fella. He absolutely adores fuss and cuddles, although he does get rather demanding, and indeed rather 'possessive' once he's climbed on you and wrapped himself around your neck and shoulders! Bagpuss is recovering from a stomach bug, and he does have a food obsession. He is a very clever and resourceful cat, in his efforts to scavenge food he will open fridges and cupboards that do not have child-proof locks.

Bagpuss is looking for a new home - perhaps as an only pet (to avoid him eating the food of others) - with an understanding family where he will be given all the attention and love that he craves.

Yoda (Black/White; Sex F; Age 3) is a very lovely, sweet and friendly girl. Yoda has been a very well-cared for cat, with all necessary veterinary checks and vaccinations. However, despite all of this, unfortunately she became unwanted. Yoda is very clean and tidy, and is a very friendly and affectionate girl who is longing to be back in a home with a loving family.

Yoda needs a new loving home, she gets on very well with children, and she would make a lovely family pet.



Mimi Needs a New Home!



Mimi is a lovely girl. She is well behaved and gets on well with other dogs. Mimi is loving, playful and intelligent. no older than 9yrs but could be younger.

She loves walks and lots of attention, and she is fine being left on her own for up to three hours. She is calm and quiet when people knock at the door and has been good with strangers.

She can walk nicely on the lead, but will just test the limits sometimes, just to see how far in front you'll allow her to walk. She is living with other dogs at the moment, she was nervous initially, but soon relaxed. She has lived with a cat.

If you are interested please telephone Judith 07791 292635

If you require information about caring for any pet please look at the 'advice for pet care' on the national web site www.rspca.org.uk.

The Inspectors often have to relocate feral cats - if you know of a stable or farm where these animals can be transferred please contact Judith.

www.rspca-oxfordshire.org.uk

Look After Local Birds in the Winter

In winter, birds may have difficulty finding food in the wild such as berries, insects, seeds, worms and fruit, so an extra meal from either your kitchen or some commercially available bird food will help keep them going. Treats you can put out for birds include peanuts in shells threaded together on string, unsalted peanuts in feeders, wild bird seed (widely available in shops and garden centres or from CJ WildBird Foods), crumbled or grated cheese, pastry, stale cake, breadcrumbs (moisten if the bread is very dry), cooked rice and pasta, fat from chops and bacon rind, raisins and other dried fruit (soaked in water first) and bruised fruit like apples and pears. Remember to remove surplus food from the surrounding area daily and regularly clean your bird table thoroughly with a mild disinfectant, rinsing with fresh water. This will avoid the spread of disease.

We are now open at 36 Church Lane,
Banbury!
Open 9:30-4:30pm Mon-Sat

We are looking for volunteers, particularly on
Saturdays and good quality donations - clothes,
bric-a-brac.

Please drop in or contact Kim or Sasha on
01295 265632

Please Help Us

With money tight and our services being needed more we are in desperate need for people to hold fundraising events - local coffee mornings, jumble sales, bingo events, stalls and tombolas, sponsoring events, or any other you can think of. Please contact Judith for more suggestions and for further information.

Blackberry Farm, the RSPCA National rehoming centre near Bicester always has lots of animals looking for new homes Tel 0870 0101 852

There are also lots of other animals available - gerbils, rats chincillas, and even lots of lovely birds.

Please also look at www.rspca-oxfordshire.org.uk for more animals and further details.

www.rspca-oxfordshire.org.uk

FUNDRAISE FOR THE RSPCA!!

Like pub quizzes? Coffee mornings? Tombolas? If you have a good idea and enjoy fundraising for a good cause then the RSPCA need you! For more information on how you can help us please telephone Judith on 01608 646762.

Rooting for Pigs Campaign

Join our 'Rooting for pigs' campaign to significantly improve the welfare of one of the most intelligent, inquisitive and highly social farm animals.

We are calling for:

- * clear and consistent labelling on pork products
- * a better law to protect pig welfare.

The results of a recent poll reveal only a staggering two per cent of those questioned understand the terms used on pork products, such as 'free-range', 'outdoor bred' or 'outdoor reared', meaning almost all shoppers are confused about the conditions in which pigs are actually reared.

That's why we are calling on supermarkets and other UK food retailers to work with us and the British pig industry to agree upon set definitions.

Helping shoppers make an informed choice

We believe clearer labelling will help shoppers make informed choices about pig farming methods they support through the pork they buy.

It has been law to label eggs with the method of production since 2004. Since then, there has been an increase in the sale of higher welfare eggs as consumers make an informed choice about the eggs they buy. We want to see the same happen for pigs.

Please join the campaign on the national RSPCA website www.rspca.org.uk and click on the news bulletin about the pigs.



Donations Urgently Needed!

We urgently require donations for our shop in Banbury. Demand is ever growing on our services to help all types of animals, some in desperate need, throughout Oxfordshire. Our shop is a key source of revenue to fund the many success stories of distressed animals we have helped to a happier and better life.

We can only continue with this valuable and worthwhile work if our shop is well stocked with goods for sale.

Please help us to help your local animals and support our shop with any goods you can spare. We have a comprehensive collection service available across the Oxfordshire area, please contact us for details.

Please telephone Judith 07791 292635 or email: judithgarvey@fsmail.net

www.rspca-oxfordshire.org.uk

**Animal Cruelty Helpline Number
0300 1234 999**